

Critiquing Operations on Expressions

Name: _____ Date: _____ Period: _____

Directions: Critique the following student work by checking one of the three boxes. If you check the 2nd or 3rd box, use the explanation box to describe what was completed incorrectly.

1. Simplify $4x - 2 + (-2x) + 7$.

$$4x - 2 - 2x + 7$$
$$(4x - 2x) - (2 + 7)$$
$$\boxed{2x - 9}$$

Check one of the following:

- The answer is correct and the work proves the answer is correct.
- The answer is correct, but the work doesn't prove it. (Explain in the next box →)
- The answer is incorrect. (Explain in the next box →)

Explanation

2. Simplify $(11.5x - 6) + (-2x + 3)$.

$$11.5x - 2x + 6 + 3$$
$$\boxed{9.5x - 3}$$

Check one of the following:

- The answer is correct and the work proves the answer is correct.
- The answer is correct, but the work doesn't prove it. (Explain in the next box →)
- The answer is incorrect. (Explain in the next box →)

Explanation

Critiquing Operations on Expressions

3. Find the perimeter of the rectangle with sides $(2.9x + 1)$ and $4x$.

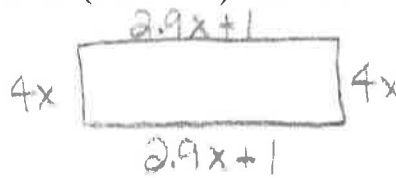
$$2(2.9x + 1) + 4x$$

$$2(2.9x) + 2(1) + 4x$$

$$4.58x + 2 + 4x$$

$$4.58x + 4x + 2$$

$$\boxed{8.58x + 2}$$

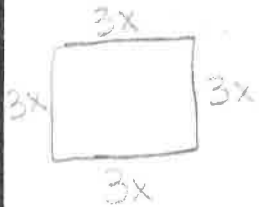


Check one of the following:

- The answer is correct and the work proves the answer is correct.
- The answer is correct, but the work doesn't prove it. (Explain in the next box →)
- The answer is incorrect. (Explain in the next box →)

Explanation

4. Find the area of the square with side $3x$.



$$4(3x)$$

$$\boxed{12x}$$

Check one of the following:

- The answer is correct and the work proves the answer is correct.
- The answer is correct, but the work doesn't prove it. (Explain in the next box →)
- The answer is incorrect. (Explain in the next box →)

Explanation

Critiquing Operations on Expressions

5. Simplify $2[3 - (x + 7)]$.

$$2(3) - 2(x+7)$$

$$6 - 2x + 14$$

$$6 + 14 - 2x$$

$$\boxed{20 - 2x}$$

Check one of the following:

- The answer is correct and the work proves the answer is correct.
- The answer is correct, but the work doesn't prove it. (Explain in the next box \rightarrow)
- The answer is incorrect. (Explain in the next box \rightarrow)

Explanation

6. Expand $6\left(-4\frac{1}{2}x + 8\right)$.

$$6\left(-4\frac{1}{2}x\right) + 6(8)$$

$$\boxed{-27x + 48}$$

Check one of the following:

- The answer is correct and the work proves the answer is correct.
- The answer is correct, but the work doesn't prove it. (Explain in the next box \rightarrow)
- The answer is incorrect. (Explain in the next box \rightarrow)

Explanation